





Product Range Overview: Larssen Hot Rolled Sheets

	Section modulus		Weight		Second moment of inertia	Back thickness	Web thickness	Wall height	Section width
	$W_y^{1)}$	cm^3/m	kg/m^2	kg/m	I_y	t	s	h	b
	Wall	Single pile	Wall	Single pile	Wall	mm	mm	mm	mm
LARSSEN sections									
 LARSSEN 720 (used to be L755)	2000	588	128.5	96.4	45000	12.0	10.0	450	750
LARSSEN 703	1210	414	96.4	67.5	24200	9.5	8.0	400	700
LARSSEN 703 K	1300	426	103.0	72.1	25950	10.0	9.0	400	700
LARSSEN 703 10/10 ³⁾	1340	437	108.0	75.6	26800	10.0	10.0	400	700
 LARSSEN 716 (used to be L704)	1600	511	114.2	79.9	35200	10.2	9.5	440	700
LARSSEN 600	510	130	94.0	56.4	3825	9.5	9.5	150	600
LARSSEN 600 K	540	133	99.0	59.4	4050	10.0	10.0	150	600
LARSSEN 601	745	251	78.0	46.8	11520	7.5	6.4	310	600
LARSSEN 602	830	265	89.0	53.4	12870	8.2	8.0	310	600
LARSSEN 603	1200	330	108.0	64.8	18600	9.7	8.2	310	600
LARSSEN 603 K	1240	340	113.5	68.1	19220	10.0	9.0	310	600
LARSSEN 603 10/10 ³⁾	1260	350	116.0	69.6	19530	10.0	10.0	310	600
LARSSEN 604 n	1600	415	123.0	73.8	30400	10.0	9.0	380	600
LARSSEN 605	2020	520	139.2	83.5	42420	12.5	9.0	420	600
LARSSEN 605 K	2030	537	144.5	86.7	42630	12.2	10.0	420	600
 LARSSEN 605/14.0/9.1	2200	520	147.0	88.2	46200	14.0	9.1	420	600
LARSSEN 606 n	2500	605	157.0	94.2	54375	14.4	9.2	435	600
 LARSSEN 628	2780	584	165.5	99.3	63380	16.3	9.8	456	600
LARSSEN 607 n	3200	649	190.0	114.0	72320	19.0	10.6	452	600
LARSSEN 22 10/10 ³⁾	1300	369	130.0	65.0	22100	10.0	10.0	340	500
LARSSEN 23	2000	527	155.0	77.5	42000	11.5	10.0	420	500
LARSSEN 24	2500	547	175.0	87.5	52500	15.6	10.0	420	500
LARSSEN 24/12	2550	560	185.4	92.7	53610	15.6	12.0	420	500
LARSSEN 25	3040	562	206.0	103.0	63840	20.0	11.5	420	500
LARSSEN 43	1660	483	166.0	83.0	34900	12.0	12.0	420	500

	Section modulus		Weight		Second moment of inertia	Back thickness	Wall height	Section width
	$W_y^{1)}$	cm^3/m	kg/m^2	kg/m	I_y	t	h	b
	Wall	Single pile	Wall	Single pile	Wall	mm	mm	mm
STU range								
STU 1000	1,000	203	103	61.8	13,000	10.3	260	600
STU 1800	1,800	376	136	81.6	32,400	13.4	360	600
STU 2700	2,700	539	177	106	56,700	18.0	420	600

edited: 2012 0130

Fitting HSP profiles with STUs, see page 27.

Note: The fitting is based on CAD drawings and might have some variances.

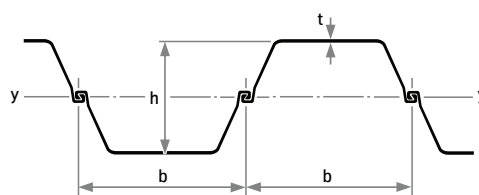
For any questions, please contact BY on 02 9409 1777.

¹⁾The section modulus values may only be used in static computations if at least every second interlock in the wall is crimped to adsorb shear forces.

²⁾Wall assembly fabricated from LARSSEN 43 sections. Where quad pile assemblies are supplied, allowance must be made for the weight of the weld seams and reinforcements.

³⁾Rolling/delivery on request only.

⁴⁾With the use of quadruple piles
b = 1416 mm



Lengths from 30 m to 36 m on request.

The basis for billing is the weight of the single pile (kg/m).