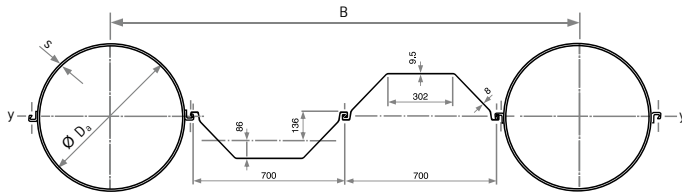
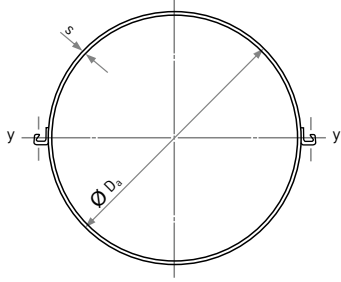


Pipe Pile and Sheet Pile Composite Wall

Pipe pile with welded-on corner sections 22; $\varnothing D_a = 813 - 1420$ mm

Pipe diameter	Wall thickness	Weight	Steel area	Circumference	Second moment of inertia	Section modulus	Radius of gyration	Coating area
D_a mm	s mm	kg	A cm ²	U m	J_y cm ⁴	W_y cm ³	i_y cm	Water side m ² /m
813.0	10.0	219	279	2.85	203364	5003	27.0	1.36
813.0	12.5	268	341	2.85	251860	6196	27.2	1.36
813.0	14.2	301	383	2.85	284315	6994	27.2	1.36
914.0	10.0	244	311	3.17	290147	6349	30.5	1.52
914.0	12.5	299	381	3.17	359708	7871	30.7	1.52
914.0	14.2	336	428	3.17	406344	8892	30.8	1.52
1016.0	10.0	269	343	3.49	399850	7871	34.1	1.68
1016.0	12.5	331	421	3.49	496123	9766	34.3	1.68
1016.0	14.2	372	474	3.49	560762	11039	34.4	1.68
1220.0	10.0	320	407	4.13	695738	11406	41.3	2.00
1220.0	12.5	393	501	4.13	864327	14169	41.5	2.00
1220.0	14.2	443	565	4.13	977765	16029	41.6	2.00
1220.0	16.0	496	632	4.13	1096822	17981	41.7	2.00
1420.0	10.0	369	470	4.76	1100878	15505	48.4	2.31
1420.0	12.5	455	580	4.76	1368830	19279	48.6	2.31



LARSSEN 703 intermediate piles



Pipe pile with welded-on corner sections 22; $\varnothing D_a = 1420 - 2020$ mm

Pipe diameter	Wall thickness	Weight	Steel area	Circumference	Second moment of inertia	Section modulus	Radius of gyration	Coating area
D_a mm	s mm	kg	A cm ²	U m	J_y cm ⁴	W_y cm ³	i_y cm	Water side m ² /m
1420.0	14.2	513	654	4.76	1549399	21823	48.7	2.31
1420.0	16.0	575	773	4.76	1739152	24495	48.7	2.31
1420.0	17.5	626	798	4.76	1896156	26706	48.7	2.31
1620.0	12.5	517	658	5.39	2039150	25175	55.7	2.62
1620.0	14.2	584	743	5.39	2309173	28508	55.7	2.62
1620.0	16.0	654	833	5.39	2593201	32015	55.8	2.62
1620.0	17.5	713	908	5.39	2828420	34919	55.8	2.62
1620.0	20.0	810	1032	5.39	3217494	39722	55.8	2.62
1820.0	14.2	654	833	6.02	3283855	36086	62.8	2.94
1820.0	16.0	733	934	6.02	3689127	40540	62.9	2.94
1820.0	17.5	799	1018	6.02	4024989	44231	62.9	2.94
1820.0	20.0	909	1158	6.02	4581008	50341	62.9	2.94
2020.0	16.0	812	1034	6.65	5057090	50070	69.9	3.25
2020.0	17.5	885	1128	6.65	5518851	54642	69.9	3.25
2020.0	20.0	1008	1284	6.65	6283814	62216	70.0	3.25

