

Hydraulic Impact Hammers

Banut

Piling Rigs and Hydraulic Impact Hammers SuperRAM

At the beginning of the year 2003 the company ABI GmbH extended their product range by the brand BANUT. BANUT has been formed at the beginning of the 70's and is known for hydraulic impact hammers and fixed leader masts. The hydraulic impact hammers SuperRAM are offered with striking mass from approx. 5 to 10 tons. With the amalgamation of ABI, BANUT and DELMAG, Steelcom is able to offer its customers affordable solutions for any sheet piling or foundation project. Contact ThyssenKrupp Steelcom for technical specifications of BANUT products.



BANUT Fixed Leader Mast

Technical Specifications		Banut 555	Banut 655
Usable leader length	mm	15000	15000
Pile length	mm max	16000	20000
Leader mast displacement			
upper ground	mm	+ 1325	+ 5500
under ground	mm	- 1275	- 1000
Leader mast inclination			
front/rear	degree max	18 / 45	18 / 45
laterally	degree max	14	18
Pile weight	kg max	6000*	8500* (12000)*
Torque absorption	daNm	10000	13000
Extraction force			
Pile winch	kN max	60	85 (120)
Hammer winch	kN max	120	120
Rope speed			
Pile winch	mm	50	50
Hammer winch	mm	50	50
Weight of piling equipment without attachments			
	t ca	49	65
DIMENSIONS			
Height max	mm	22200	26500
Center to driving axle	mm	4000 - 5200	4450 - 5650
Center to rear end	mm	4940	5100
Transport width	mm	3200	3300
Transport length	mm	22370	22000
Transport height	mm	3300	3400
Leader L x W (Guide width)	mm	20000 x 500 (80)	20000 x 600 (80)
Base carrier SR 40 T	mm	Engine CAT 195 kW	Engine CAT9 261 kW

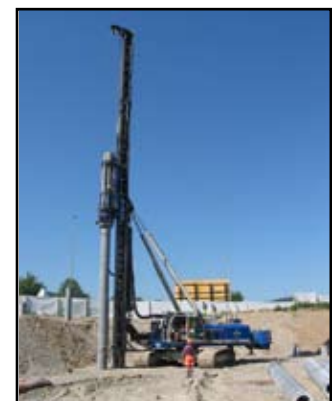
* Weights and lengths depend on reach and leader mast inclinations.

BANUT SuperRAM

Technical Specifications		5000	6000	6000XL	8000XL	10000XL
Weight of striking mass *	kg	5060	6075	6110	8060	10100
Total weight excl helmet	kg	7000	8000	9200	11560	13600
Performance						
Drop height	mm	150 - 1200	150 - 1200	150 - 1200	150 - 1200	150 - 1200
Impact frequency**	Blows/min	0 - 100	0 - 100	0 - 100	0 - 100	0 - 80
Impact energy	kJ	0 - 59	0 - 71	0 - 71	0 - 94	0 - 118
Hydraulic System						
Working Pressure	MPa	28	30	30	30	30
Hydraulic flow rate	l/min	200	210	240	300	325
Required hydr power	kW	93	105	120	150	162
DIMENSIONS SuperRAM						
Length to hammer bottom line						
in resting position	mm	3900	4120	4435	4435	4435
in cycle max	mm	4680	5320	5190	5190	5190
Width	mm	1200	1200	1675	1675	1675
Frame width	mm	410 - 600	410 - 600	410 - 600	410 - 600	410 - 600
Driving axle to center guide	mm	630	630	715	715	715
Depth	mm	1100	1100	1300	1300	1300
Total Length	mm	= A + length of the chosen driving cap				

* standard striking mass material: steel/lead
 ** dependent on drop height and pump capacity

Notice:
 Power supply for all designs:
 Voltage V DC 24,
 Rating W 200



BANUT SuperRAM10000XL



BANUT SuperRAM6000XL