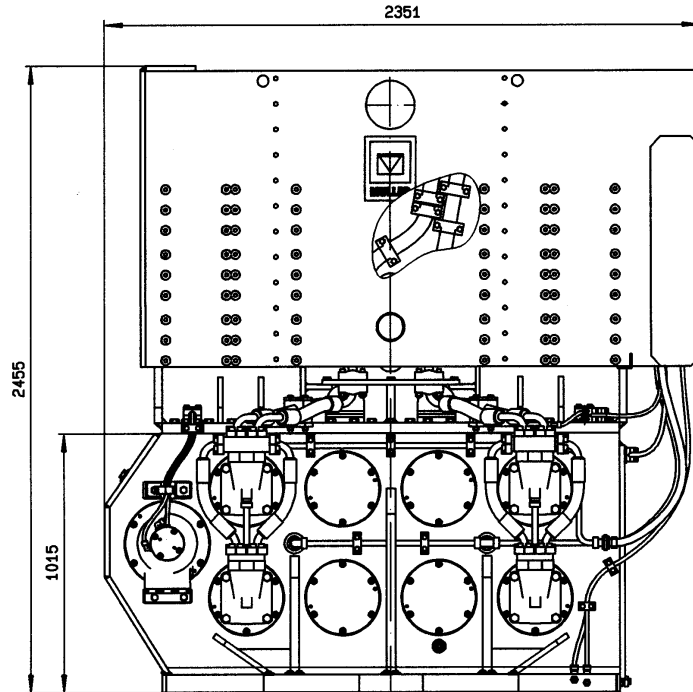
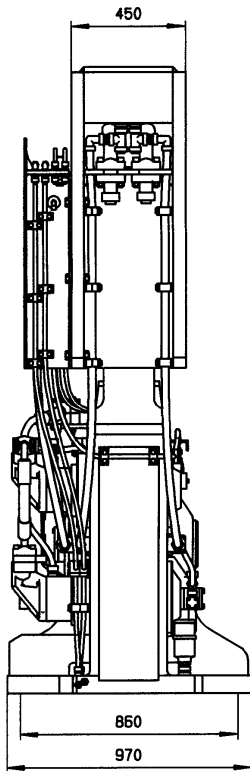




Müller-Vibrator MS-32 HFV / MS-A 675 V	TA 0734 Dat.: 17.12.1999 Name: Zulauf
---	--



TECHNISCHE DATEN / TECHNICAL DATA

Vibrator

Fliehkraft max.	centrifugal force max.	kN	1980
Exzentermoment	eccentric moment	kgm	0-32
Schwingungsfrequenz max.	oscillation frequency max.	Hz	39.6
Zugkraft max.	pulling force max.	kN	600
Gewicht *	weight *	kg	7500
Gewicht (dynamisch) *	weight (dynamic) *	kg	5100
Arbeitsdruck max.	working pressure max.	bar	350
Schluckvolumen max.	volume input max.	l/min	1045

Hydraulik:

Aggregat	power pack		MS-A 675V
Volumenstrom max.	volume output max.	l/min	1065
Betriebsdruck max.	working pressure max.	bar	380

*ohne Spannzange

*without clamping device

Zentralumlaufschmierung der Hauptlager mit Ölkühlung.

Centrelixed force-feed lubrication to the main bearings with cooling.

Subject to Technical modifications

Distributed in Australia & New Zealand by ThyssenKrupp Steelcom <small>A company of ThyssenKrupp Services</small>	
PO Box 840 North Sydney NSW 2059 Australia T: +61 2 9954 9166 Sales +61 2 4966 0688 F: +61 2 9955 4298 enquiries@steelcom.com.au www.steelcom.com.au	PO Box 51254 Pakuranga Auckland 2140 New Zealand T: +64 9 576 3977 F: +64 9 576 3978 afenn@steelcomnz.co.nz www.steelcomnz.co.nz

ThyssenKrupp

