



First ABI MobilRam System TM13/16, here at last!

Due to the rising demand for versatile applicable machines, ThyssenKrupp Steelcom is proud to announce the arrival of ABI Mobilram TM13/16.

The proven ABI Mobilram system is ideally suited to Australian civil drilling and piling requirements.

The new ABI 13/16 Mobilram provides the flexibility and capacity to handle compacted ground conditions, with the combination of pre-drilling and sheet pile driving capability in one unit.

The self erecting telescopic mast offers compact transport dimensions and rapid on-site set up, while the 180 degree slewing capability allows corners and difficult sites to be handled with ease. Site productivity is delivered through immediate mobilization, the rapid changing device for attachments, straight line wall accuracy and the capacity to drive 16m sheet piles under the vibro hammer.

For more info, contact our Sales at (AU) +61 2 4966 0688 or (NZ) +64 9 576 3977.



From drilling to driving.....
all-in-one machine!

STEELCOMMENTARY

Steel prices on the rise

Steel prices are now at a record highs but in the view of steel industry experts, the run has not finished and prices are set to push even higher in the coming months.

AUSTRALIA'S biggest steel maker, BlueScope, warned in late February that massive rises in iron and coking coal prices were set to stoke inflation, and flagged looming increases in prices of steel products. OneSteel, similarly warned of the rising prices despite increasing its prices by about 10% in recent months, noting that global demand for steel continued to be strong.

With the interest rate rises and local cost inflation, the steel industry is facing big cost increases, with iron ore prices set to rise at least 65 per cent.

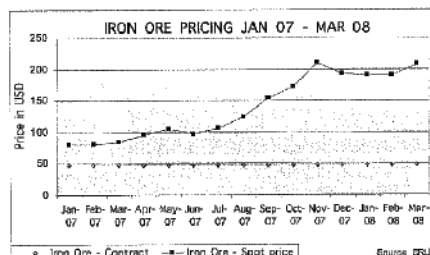
Fabricated steel prices rose 9% last year, a figure likely to be exceeded in 2008. Reinforcement prices fell in the second half of last year but rose sharply at the beginning of 2008. The Australian reinforcing industry is expecting possible increases of 40% plus for reinforcing and other steel products.

Suppliers have implemented several price increases since the turn of the year, following a surge in world scrap prices and continuing demand.

Local steel mills have also advised processors of significant increases due to major rises in their input costs such as the cost of scrap, energy and other raw materials, which are all subject to global pricing.

The outlook remains highly volatile as key issues surround availability and price increases. At ThyssenKrupp Steelcom, our price policy reflects our commitment to stability and communications with our customers. We encourage prudent project planning to our customers and clients which includes: open communication on availability and budget pricing; factoring lead times into project decision making time lines, and covering price movements and availability with early orders to reduce project risk.

For any queries, contact us at ThyssenKrupp Steelcom at 02 9954 9166.



Builders and generators can expect to see major increases in the price of steel reinforcement coming through in 2008. Source: CRU

Australia • NZ • PNG • Pacific Islands

Steelnews

ThyssenKrupp Steelcom

HO: +61 2 9954 9166
 Fax: +61 2 9955 4298
 Sales +61 2 4966 0688
 NZ: +64 9 576 3977
 enquiries@steelcom.com.au
 www.steelcom.com.au



INFOCUS: STEEL SHEET PILE AS FLOOD PROTECTION

Flood disasters, once regarded as once-a-century events are becoming more and more common. Experts agree that urgent action is required. In Australia, flood damage regularly tops the loss statistics. Some losses are foreseeable and can be prevented by flood protection measures matched to local requirements.

In Australia, people have settled near rivers and coasts for years. Recent climate changes and increasing environmental disasters call for urgent new flood protection concepts.

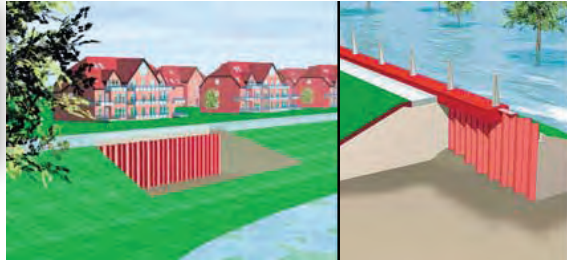
Sheet Piles provide one means of ensuring lasting protection: They can stabilize levies for far more than 100 years - and, if necessary, can be quickly and effortlessly extended.

Sheet piling has been used in port construction for more than a century. Now, these steel walls are also being used for flood protection. Sheet piling is driven through the top of the levies and anchored in the ground at a depth of two or three meters below the levy. A newly developed modular system makes it possible to increase the height of the sheet pile wall if required. Depending on the levy, the individual elements can be six to twelve meters long and from six to ten millimeters thick. The technology particularly suited for flood protection was rarely used in levy construction until recently.

Essen-based manufacturer ThyssenKrupp GfT Bautechnik GmbH, ThyssenKrupp Steelcom's sister company, witnessed first hand the catastrophic effects of insufficient flood protection, and have developed and supplied its watertight steel walls for levy projects in Germany, Russia, the Czech Republic and Spain.

The use of sheet pile walls for flood protection is a relatively recent development, as the old levies served their purpose for a long time. But now it's time for a rethink of an effective protection against floods. Steel sheet piles are driven into the levy, thus sealing it up and stabilizing it. The elements are stuck 2 to 3 m into the soil underneath the levy - meaning that the sheet pile wall holds up even if the entire levy is washed away on the river side. And that's not the only advantage in favor of sheet piles.

Another advantage of this system is speed of implementation - steel walls provide fast, reliable



When water rises, so does the wall.

and economic flood protection. Ecological reasons clearly favour the use of sheet pile walls, as they can be removed without residues and can be fully recycled. Where visual and aesthetic requirements are important - steel sheet pile walls offer flexible design options, including decorative capping and removable walkway barriers. Depending on landscaping goals, the sheet piling can be installed either visibly or as a levy raising solution. Visible parts of the pile wall can be architecturally enhanced in various ways, including: painting, brick facing, natural stone facing, cladding with various materials, and greening.

For more information on flood protection or any of ThyssenKrupp Steelcom's steel sheet pile and piling equipment, call 02 4966 0688.

Products Range Steel Sheet Piles:

- * Comprehensive range of sheet pile for hire and sale
- * Full range of composition and corner sections to compliment sheets
- * 2000 tonnes on the ground in Australia offering ex-stock availability on most sections.

IN BRIEF

ThyssenKrup Steelcom supplied

165LM of the Larssen L755 sheet pile in 2000 cm³/m section modulus (135 LM x 8m x 30 LM) to Vid Roads for delivery to their year in Sale, VIC.

DID Piling Pty Ltd utilized the

PTC 75HD in the upgrade of the Beerwah Crossing project.

The scope of work included in this project involved 900-1200mm diameter liners of 13m long and 10mm thick used as foundation for the bridge and being driven 20m into the ground.

Australia • NZ • PNG • Pacific Islands

news

Steel



ThyssenKrupp Steelcom

HO: +61 2 9954 9166
Fax: +61 2 9955 4298
Sales +61 2 4966 0688
NZ: +64 9 576 3977
enquiries@steelcom.com.au