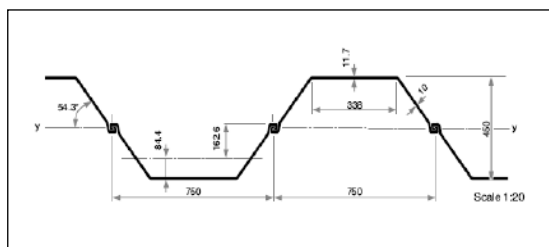
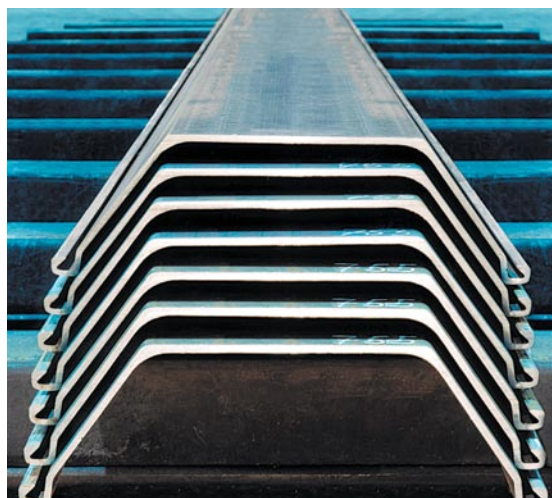


## More Steel in Auckland



A shipment of Hoesch Larssen 755 steel sheet pile has landed in Auckland for sale and hire. With a section modulus of 580 cm<sup>3</sup> per single pile the U shaped Larssen 755 is a wider (750mm) and deeper (450mm) section that achieves the same section modulus at a weight advantage of 11 kg/m<sup>2</sup> of wall.

The lightweight KL 3/4 will be available on the ground soon. This hugely functional profile boasts a section modulus of 276 cm<sup>3</sup>, width of 700mm and weight of 31.6 kg/m<sup>2</sup> of wall. We still have some L601 left in our yard at the old price - please ring Andy Fenn to discuss your requirements.

### Vibro-Hammers

The PTC 30HI is just back from hire. This powerful and highly functional unit provides an eccentric moment of 30mk and centrifugal force of 946 kN.

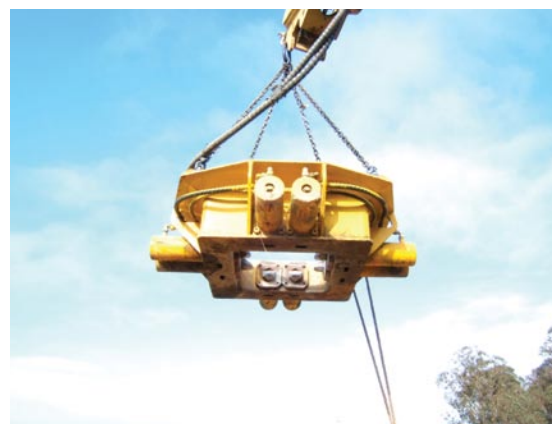
The ABI HVR60 excavator mounted vibrator has been used on various small construction projects and the feedback to date is that it is a very handy unit.

The EMV offers a static moment of 3kgm and centrifugal force of 400kN and is available now for hire and sale.

### Concrete Pile Breakers

The Taets Type 5 concrete pile breaker is being used on the new Manukau Highway by Leighton Works. Piles are taken down to the required depth and the reinforcement steel exposed to be tied in.

Phil Cavanagh of Leighton Works had used these machines in various Australian projects. When he became aware the pile trimmers were in New Zealand he hired the Type 5 from Steelcom NZ to save project time and money. Steelcom NZ also offer a booking system whereby the pile trimmer can be reserved for a specific date thus helping the project flow.



# STEELCOM SHEET PILE & PILING EQUIPMENT FOR HIRE & SALE

Australia • NZ • PNG • Pacific Islands

# news

## New improved Macalloy 520 tie bar system

Macalloy have been leaders in the design, manufacture and supply of threaded bar system since 1948. Their newest range of products is the Macalloy 520 tensile structure system.



The Macalloy 520 system has a guaranteed minimum yield stress of 520N/mm<sub>2</sub> and is available in carbon steel in diameters M10 to M100. The fittings have been designed to take the increased capacity of the system, allowing approximately 13% higher load to be carried for the same diameter, when compared to the Macalloy 460 system or 45% when compared to the more common grade S355 steel.

## Piling begins on the Wellington Waterfront

Piling is about to commence on the Kumutoto Public Space project (pictured) for which Brian Perry Civil is responsible.

The contract is part of the continual upgrade of Wellington's waterfront area. Steelcom NZ supplied LX20 sheet pile which will remain as part of the project's permanent works. The undulating profile of the sheet pile will create an interesting feature and the project is an example of sheet pile, which is an established solution in temporary applications, increasingly being used in permanent works.



## Steelcom products

### Steel Sheet pile:

- Comprehensive range of sheet pile for hire and/or sale
- Full range of composition and corner sections to compliment sheets
- Steel on the ground in New Zealand providing ex stock availability on many sections

### Impact and vibratory piling hammers

Steelcom hire and sell many of the world's finest brands of diesel and impact hammers.

### Concrete pile breakers

Excavator mounted pile trimmers for round, square and octagonal piles.

### The ABI Mobilram piling rig

The Mobilram can be supplied with piling, extracting and augering attachments and has a usable pile length of 14 metres. Steelcom Australia has increased its hire fleet by another two units which are also available to the New Zealand market.

PO Box 51254 Pakuranga  
Auckland 2140 New Zealand  
T 09 576 3977  
F 09 576 3978  
afenn@steelcomnz.co.nz  
www.steelcomnz.com.au