

Section illustrations and data

LARSEN 601

Section width per D = 1200 mm

	Unit	Per m wall	Single pile	Double pile	Triple pile	
			E	D	Dr	
Elastic section modulus ¹⁾	W_y	cm ³	745	251	890	1050
	W_z	cm ³	–	830	–	–
Plastic section modulus ¹⁾	W_y	cm ³	836	–	–	–
Weight		kg/m	77.2	46.3	92.6	138.9
Cross sectional area		cm ²	98.3	59.0	118.0	177.0
Circumference ²⁾		cm	245	172	319	466
Coating area ³⁾		m ² /m	2.45	1.60	3.07	4.54
Static moment	S_y	cm ³	418	–	–	–
Second moment of inertia	I_y	cm ⁴	11520	2650	13830	19320
	I_z	cm ⁴	–	26280	–	–
Radius of gyration	i_y	cm	10.83	6.70	10.83	10.44

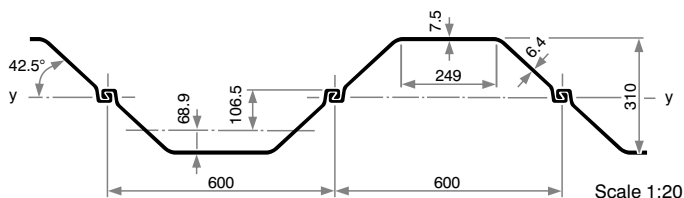
1) Section modulus referred:

E and Dr – the heavy axis of the respective element; D and per m wall – the wall axis y-y.

The section modulus of D, Dr u. per m wall requires locking of the factory-crimped interlocks to accommodate the shear forces.

2) Including the internal surface of free interlocks of single, double and triple piles.

3) Without interlock interior – two-side coating.



Classification according to ENV 1993-5

Steel grade					
S 240 GP	S 270 GP	S 320 GP	S 355 GP	S 390 GP	S 430 GP
2	2	3	3	3	3