

Section illustrations and data

LARSEN 602

Section width per D = 1200 mm

	Unit	Per m wall	Single pile	Double pile	Triple pile	
			E	D	Dr	
Elastic section modulus¹⁾	W_y	cm ³	830	265	996	1170
	W_z	cm ³	–	920	–	–
Plastic section modulus ¹⁾	W_y	cm ³	964	–	–	–
Weight		kg/m	89.0	53.4	106.8	160.2
Cross sectional area		cm ²	113.3	68.0	136.0	204.0
Circumference ²⁾		cm	245	172	319	466
Coating area ³⁾		m ² /m	2.45	1.60	3.07	4.54
Static moment	S_y	cm ³	482	–	–	–
Second moment of inertia	I_y	cm ⁴	12870	2790	15440	21520
	I_z	cm ⁴	–	29160	–	–
Radius of gyration	i_y	cm	10.66	6.41	10.66	10.27

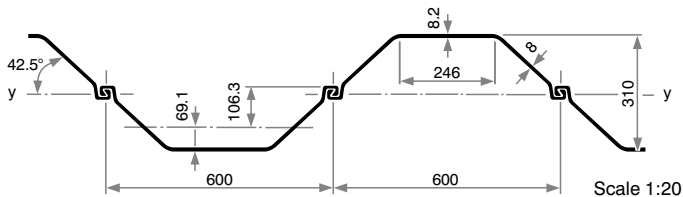
1) **Section modulus referred:**

E and Dr – the heavy axis of the respective element; D and per m wall – the wall axis y-y.

The section modulus of D, Dr u. per m wall requires locking of the factory-crimped interlocks to accommodate the shear forces.

2) Including the internal surface of free interlocks of single, double and triple piles.

3) Without interlock interior – two-side coating.



Classification according to ENV 1993-5

Steel grade					
S 240 GP	S 270 GP	S 320 GP	S 355 GP	S 390 GP	S 430 GP
2	2	2	2	3	3