

## Section illustrations and data

## LARSEN 703

Section width per D = 1400 mm

	Unit	Per m wall	Single pile	Double pile	Triple pile	
			E	D	Dr <sup>4)</sup>	
Elastic section modulus <sup>1)</sup>	W <sub>y</sub>	cm <sup>3</sup>	1210	414	1700	1980
	W <sub>z</sub>	cm <sup>3</sup>	–	1310	–	–
Plastic section modulus <sup>1)</sup>	W <sub>y</sub>	cm <sup>3</sup>	1460	–	–	–
Weight		kg/m	96.4	67.5	135.0	202.5
Cross sectional area		cm <sup>2</sup>	122.9	86.0	172.0	258.0
Circumference <sup>2)</sup>		cm	251	202	377	553
Coating area <sup>3)</sup>		m <sup>2</sup> /m	2.51	1.90	3.65	5.41
Static moment	S <sub>y</sub>	cm <sup>3</sup>	730	–	–	–
Second moment of inertia	I <sub>y</sub>	cm <sup>4</sup>	24200	5630	34000	47100
	I <sub>z</sub>	cm <sup>4</sup>	–	48400	–	–
Radius of gyration	i <sub>y</sub>	cm	13.90	8.00	13.90	13.40

## 1) Section modulus referred:

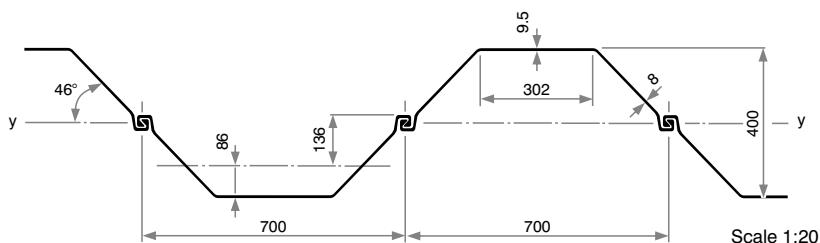
E and Dr – the heavy axis of the respective element; D and per m wall – the wall axis y-y.

The section modulus of D, Dr u. per m wall requires locking of the factory-crimped interlocks to accommodate the shear forces.

2) Including the internal surface of free interlocks of single, double and triple piles.

3) Without interlock interior – two-side coating.

4) Rolling/delivery on request only.



## Classification according to ENV 1993-5

Steel grade					
S 240 GP	S 270 GP	S 320 GP	S 355 GP	S 390 GP	S 430 GP
2	2	3	3	3	3