

Section illustrations and data

LARSSEN 755

Section width per $D = 1500$ mm

	Unit	Per m wall	Single pile	Double pile	Triple pile	
			E	D	Dr ⁴⁾	
Elastic section modulus¹⁾	W_y	cm ³	2000	580	3000	3407
	W_z	cm ³	–	1921	–	–
Plastic section modulus ¹⁾	W_y	cm ³	2284	–	–	–
Weight		kg/m	127.5	95.6	191.2	286.8
Cross sectional area		cm ²	162.4	121.8	243.6	365.4
Circumference ²⁾		cm	256	221	414	606
Coating area ³⁾		m ² /m	2.56	2.09	4.02	5.94
Static moment	S_y	cm ³	1142	–	–	–
Second moment of inertia	I_y	cm ⁴	45000	9431	67500	92620
	I_z	cm ⁴	–	75690	–	–
Radius of gyration	i_y	cm	16.65	8.80	16.65	15.93

1) Section modulus referred:

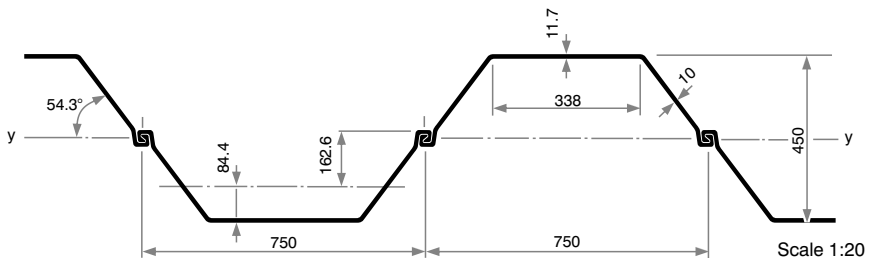
E and Dr – the heavy axis of the respective element; D and per m wall – the wall axis y-y.

The section modulus of D, Dr u. per m wall requires locking of the factory-crimped interlocks to accommodate the shear forces.

2) Including the internal surface of free interlocks of single, double and triple piles.

3) Without interlock interior – two-side coating.

4) Rolling/delivery on request only.



Classification according to ENV 1993-5

Steel grade					
S 240 GP	S 270 GP	S 320 GP	S 355 GP	S 390 GP	S 430 GP
2	2	2	2	2	3