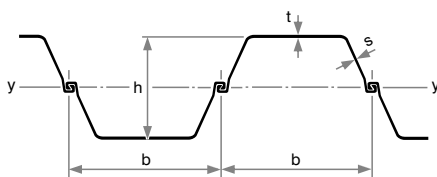


LARSSEN sections

	Section modulus		Weight		Second moment of inertia	Section width	Wall height	Back thickness	Web thickness
	$W_y^{1)}$ cm ³ /m	cm ³ / Single pile	kg/m ²	kg/m	I_y cm ⁴ /m	b	h	t	s
	Wall	Single pile	Wall	Single pile	Wall	mm	mm	mm	mm
LARSSEN 755	2000	580	127.5	95.6	45000	750	450	11.7	10.0
LARSSEN 703	1210	414	96.4	67.5	24200	700	400	9.5	8.0
LARSSEN 703 K	1300	426	103.0	72.1	25950	700	400	10.0	9.0
LARSSEN 703 10/10 ³⁾	1340	437	108.0	75.6	26800	700	400	10.0	10.0
LARSSEN 704	1600	529	115.0	80.5	35200	700	440	10.2	9.5
LARSSEN 600	510	130	94.0	56.4	3825	600	150	9.5	9.5
LARSSEN 600 K	540	133	99.0	59.4	4050	600	150	10.0	10.0
LARSSEN 601	745	251	78.0	46.8	11520	600	310	7.5	6.4
LARSSEN 602	830	265	89.0	53.4	12870	600	310	8.2	8.0
LARSSEN 603	1200	330	108.0	64.8	18600	600	310	9.7	8.2
LARSSEN 603 K	1240	340	113.5	68.1	19220	600	310	10.0	9.0
LARSSEN 603 10/10 ³⁾	1260	350	116.0	69.6	19530	600	310	10.0	10.0
LARSSEN 604 n	1600	415	123.0	73.8	30400	600	380	10.0	9.0
LARSSEN 605	2020	520	139.2	83.5	42420	600	420	12.5	9.0
LARSSEN 605 K	2030	537	144.5	86.7	42630	600	420	12.2	10.0
LARSSEN 606 n	2500	605	157.0	94.2	54375	600	435	14.4	9.2
LARSSEN 607 n	3200	649	190.0	114.0	72320	600	452	19.0	10.6
LARSSEN 22 10/10 ³⁾	1300	369	130.0	65.0	22100	500	340	10.0	10.0
LARSSEN 23	2000	527	155.0	77.5	42000	500	420	11.5	10.0
LARSSEN 24	2500	547	175.0	87.5	52500	500	420	15.6	10.0
LARSSEN 24/12	2550	560	185.4	92.7	53610	500	420	15.6	12.0
LARSSEN 25	3040	562	206.0	103.0	63840	500	420	20.0	11.5
LARSSEN 43	1660	483	166.0	83.0	34900	500	420	12.0	12.0
LARSSEN 430	6450	—	234.5²⁾	83.0	241800	708 ⁴⁾	750	12.0	12.0



¹⁾ The section modulus values may only be used in static computations if at least every second interlock in the wall is crimped to adsorb shear forces.

²⁾ Wall assembly fabricated from LARSSEN 43 sections. Where quad pile assemblies are supplied, allowance must be made for the weight of the weld seams and reinforcements.

³⁾ Rolling/delivery on request only.

⁴⁾ With the use of quadruple piles
b = 1416 mm

Lengths from 30 m to 36 m on request. The basis for billing is the weight of the single pile (kg/m).

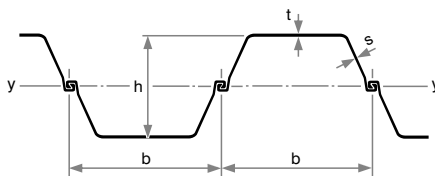
LARSSEN Rolled-down sections

		Section modulus		Weight		Second moment of inertia	Section Width	Wall height	Back thickness	Web thickness
		$W_y^{1)}$ cm ³ /m	cm ³ / Single pile	kg/m ²	kg/m	I_y cm ⁴ /m	b	h	t	s
		Wall	Single pile	Wall	Single pile	Wall	mm	mm	mm	mm
LARSSEN 755	-0.5	1920	573	124.0	93.0	43200	750	450	11.2	9.7
LARSSEN 703	-0.5	1150	408	93.0	65.1	23000	700	400	9.0	7.7
LARSSEN 704	-0.5	1530	523	111.4	78.0	33660	700	440	9.7	9.2
LARSSEN 600	-0.5	480	124	90.0	53.4	3600	600	150	9.0	9.1
LARSSEN 602	-0.5	790	254	85.5	51.3	12245	600	310	7.7	7.6
LARSSEN 603	-0.5	1150	320	104.5	62.7	17825	600	310	9.2	7.9
LARSSEN 603 K	-0.5	1190	335	109.5	65.7	18445	600	310	9.5	8.7
LARSSEN 604 n	-0.5	1540	415	119.5	71.7	29260	600	380	9.5	8.8
LARSSEN 605	-0.5	1950	515	135.5	81.3	40950	600	420	12.0	8.8
LARSSEN 606 n	-0.5	2410	585	153.7	92.2	52420	600	435	13.9	9.0
LARSSEN 607 n	-0.5	3130	671	186.5	111.9	70740	600	452	18.5	10.4
LARSSEN 23	-0.5	1930	539	151.6	75.8	40530	500	420	11.0	9.8
LARSSEN 24	-0.5	2440	542	171.6	85.8	51240	500	420	15.1	9.8
LARSSEN 25	-0.5	2980	625	202.6	101.3	62580	500	420	19.5	11.3

1) The section modulus values may only be used in static computations if at least every second interlock in the wall is crimped to adsorb shear forces.

Lengths from 30 m to 36 m on request.

The basis for billing is the weight of the single pile (kg/m).



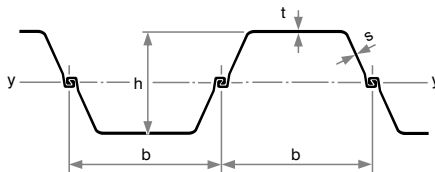
LARSSEN Rolled-up sections

		Section modulus		Weight		Second moment of inertia	Section width	Wall height	Back thickness	Web thickness
		W_y ¹⁾ cm ³ /m	cm ³ / Single pile	kg/m ²	kg/m	I_y cm ⁴ /m	b	h	t	s
		Wall	Single pile	Wall	Single pile	Wall	mm	mm	mm	mm
LARSSEN 755	+0.5	2060	586	131.5	98.6	46350	750	450	12.2	10.3
LARSSEN 703	+0.5	1270	433	100.0	70.0	25400	700	400	10.0	8.3
LARSSEN 704	+0.5	1670	548	118.6	83.0	36740	700	440	10.7	9.8
LARSSEN 600	+0.5	540	132	99.0	59.4	4050	600	150	10.0	9.9
LARSSEN 601	+0.5	790	246	81.8	49.1	12245	600	310	8.0	6.8
LARSSEN 602	+0.5	880	264	92.5	55.5	13640	600	310	8.7	8.4
LARSSEN 603	+0.5	1250	340	111.5	66.9	19375	600	310	10.2	8.5
LARSSEN 603 K	+0.5	1290	343	116.5	69.9	19995	600	310	10.5	9.3
LARSSEN 604 n	+0.5	1667	421	126.5	75.9	31675	600	380	10.5	9.2
LARSSEN 605	+0.5	2090	525	142.5	85.5	43890	600	420	13.0	9.2
LARSSEN 606 n	+0.5	2570	610	160.5	96.3	55900	600	435	14.9	9.4
LARSSEN 607 n	+0.5	3270	681	193.5	116.1	73900	600	452	19.5	10.8
LARSSEN 23	+0.5	2070	551	158.6	79.3	43470	500	420	12.0	10.2
LARSSEN 24	+0.5	2560	581	178.6	89.3	53760	500	420	16.1	10.2
LARSSEN 25	+0.5	3100	626	209.6	104.8	65100	500	420	20.5	11.7

¹⁾ The section modulus values may only be used in static computations if at least every second interlock in the wall is crimped to adsorb shear forces.

Lengths from 30 m to 36 m on request.

The basis for billing is the weight of the single pile (kg/m).

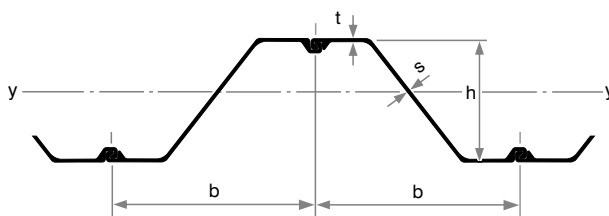


HOESCH sections (LARSEN interlock)

	Section modulus		Weight		Second moment of inertia	Section width	Wall height	Back thickness	Web thickness
	W_y cm ³ /m	cm ³ / Single pile	kg/m ²	kg/m	I_y cm ⁴ /m	b	h	t	s
	Wall	Single pile	Wall	Single pile	Wall	mm	mm	mm	mm
HOESCH 1706	1700	1148	110.8	74.8	32300	675	380	8.7	8.4
HOESCH 1806	1800	1215	117.5	79.3	34200	675	380	9.5	9.3
HOESCH 1856 K	1860	1256	123.7	83.5	35340	675	380	10.1	10.0
HOESCH 1906	1900	1283	126.3	85.3	36200	675	380	10.4	10.3
HOESCH 2506	2500	1687	142.9	96.5	53750	675	430	12.0	10.9
HOESCH 2606	2600	1755	149.9	101.2	55900	675	430	12.7	11.7
HOESCH 2706	2700	1823	157.2	106.1	58050	675	430	13.4	12.5

Lengths from 30 m to 36 m on request.

The basis for billing is the weight of the single pile (kg/m).

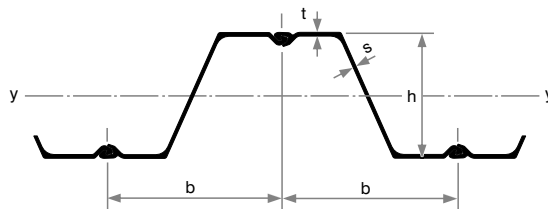


HOESCH sections (Finger-and-socket interlock)

	Section modulus		Weight		Second moment of inertia	Section width	Wall height	Back thickness	Web thickness
	W_y cm ³ /m	cm ³ / Single pile	kg/m ²	kg/m	I_y cm ⁴ /m	b	h	t	s
	Wall	Single pile	Wall	Single pile	Wall	mm	mm	mm	mm
HOESCH 3406	3420	2308	166.1	112.1	82940	675	485	13.5	10.8
HOESCH 3506	3500	2363	171.7	115.9	84880	675	485	14.0	11.4
HOESCH 3606	3600	2370	177.0	119.5	87300	675	485	14.5	12.0
HOESCH 3706	3700	2497	183.9	124.1	89730	675	485	15.1	12.7
HOESCH 3806	3780	2498	188.4	127.2	91665	675	485	15.5	13.2
HOESCH 1105	1100	633	101.0	58.1	14300	575	260	8.8	8.8
HOESCH 1205	1140	655	107.0	61.5	14820	575	260	9.5	9.5
HOESCH 1205 K	1200	690	112.5	64.7	15600	575	260	10.2	10.2
HOESCH 1255	1250	719	118.0	67.9	16250	575	260	10.8	10.8
HOESCH 1605	1600	920	107.0	61.5	28000	575	350	9.2	8.1
HOESCH 1655	1650	949	111.9	64.3	28870	575	350	9.6	8.5
HOESCH 1705	1720	989	116.0	66.7	30100	575	350	10.0	9.0
HOESCH 1705 K	1700	978	117.0	67.3	29750	575	350	9.5	9.5
HOESCH 1755	1750	1006	120.8	69.5	30625	575	350	10.4	9.5
HOESCH 1805	1800	1035	125.0	71.9	31500	575	350	10.8	9.9
HOESCH 2305	2320	1334	142.3	81.8	40600	575	350	11.5	8.4
HOESCH 2405	2400	1380	148.0	85.1	42000	575	350	12.1	9.0
HOESCH 2505	2480	1426	152.0	87.4	43400	575	350	12.5	9.5
HOESCH 2555 K	2540	1460	155.0	89.1	44450	575	350	12.8	10.0
HOESCH 2555	2550	1466	158.1	90.9	44625	575	350	13.0	10.0
HOESCH 2605	2600	1495	162.3	93.3	45500	575	350	13.3	10.3

Lengths from 30 m to 36 m on request.

The basis for billing is the weight of the single pile (kg/m).



UNION straight web sections

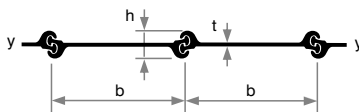
	Section modulus		Weight		Second moment of inertia	Section width	Wall height	Thickness
	W_y				I_y	b	h	t
	cm ³ /m	cm ³ /Single pile	kg/m ²	kg/m	cm ⁴ /m	mm	mm	mm
	Wall	Single pile	Wall	Single pile	Wall	mm	mm	mm
FL 511	90	45	136.0	68.0	350	500	88	11.0
FL 512	90	45	142.0	71.0	360	500	88	12.0
FL 512.7 ¹⁾	92	46	146.8	73.4	360	500	88	12.7

¹⁾ Rolling/delivery on request only.

Lengths from 30 m to 36 m on request.

Sections with other wall thicknesses can also be supplied.

The basis for billing is the weight of the single pile (kg/m).



Lightweight sections

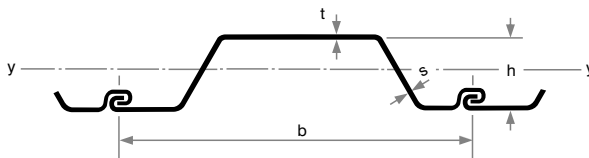
	Section modulus	Weight		Second moment of inertia	Section width	Wall height	Back thickness	Web thickness
	W_y cm^3/m	kg/m^2	kg/m	I_y cm^4/m	b	h	t	s
	Wall	Wall	Single pile	Wall	mm	mm	mm	mm
KL 3/4*	276	45.2	31.60	2042	700	146	4.0	
KL 3/5	339	55.8	39.10	2502	700	147	5.0	
KL 3/6	410	66.0	46.20	3080	700	148	6.0	
KL 3/7*	460	78.0	54.60	3500	700	149	7.0	
KL 3/8	540	88.0	61.50	4050	700	150	8.0	

***Supplied section**

Available lengths: up to 12 m (from 12 m to 14 m on request)

Warehouse lengths from 3 m to 8 m

The basis for billing is the weight of the single pile (kg/m).



Trench sheeting sections

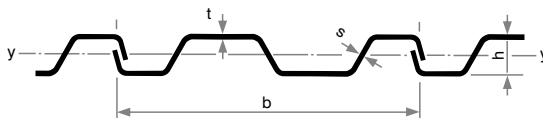
	Section modulus	Weight		Second moment of inertia	Section width	Wall height	Back thickness	Web thickness
	W_y cm^3/m	kg/m^2	kg/m	I_y cm^4/m	b	h	t	s
	Wall	Wall	Section	Wall	mm	mm	mm	mm
KD VI/6	182	62.5	37.5	726	600	78	6.0	
KD VI/8	242	83.3	50.0	968	600	80	8.0	

KD VI/6 no section that is available ex stock.

Available lengths: up to 12 m (from 12 m to 14 m on request)

Warehouse lengths from 3 m to 8 m

The basis for billing is the weight of the single pile (kg/m).



Section illustrations and data

LARSSEN 755

Section width per $D = 1500$ mm

	Unit	Per m wall	Single pile	Double pile	Triple pile	
			E	D	Dr ⁴⁾	
Elastic section modulus¹⁾	W_y	cm ³	2000	580	3000	3407
	W_z	cm ³	–	1921	–	–
Plastic section modulus ¹⁾	W_y	cm ³	2284	–	–	–
Weight		kg/m	127.5	95.6	191.2	286.8
Cross sectional area		cm ²	162.4	121.8	243.6	365.4
Circumference ²⁾		cm	256	221	414	606
Coating area ³⁾		m ² /m	2.56	2.09	4.02	5.94
Static moment	S_y	cm ³	1142	–	–	–
Second moment of inertia	I_y	cm ⁴	45000	9431	67500	92620
	I_z	cm ⁴	–	75690	–	–
Radius of gyration	i_y	cm	16.65	8.80	16.65	15.93

1) Section modulus referred:

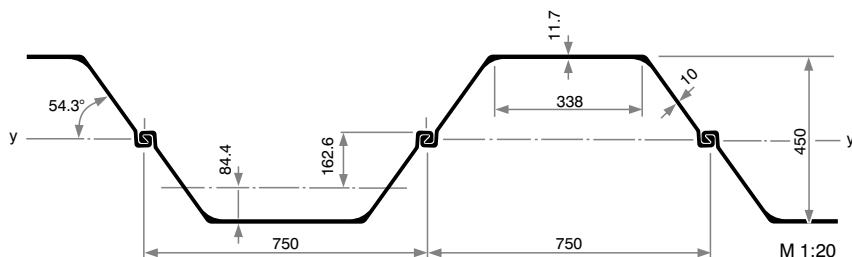
E and Dr – the heavy axis of the respective element; D and per m wall – the wall axis y-y.

The section modulus of D, Dr u. per m wall requires locking of the factory-crimped interlocks to accommodate the shear forces.

2) Including the internal surface of free interlocks of single, double and triple piles.

3) Without interlock interior – two-side coating.

4) Rolling/delivery on request only.



Classification according to ENV 1993-5

Steel grade					
S 240 GP	S 270 GP	S 320 GP	S 355 GP	S 390 GP	S 430 GP
2	2	2	2	2	3